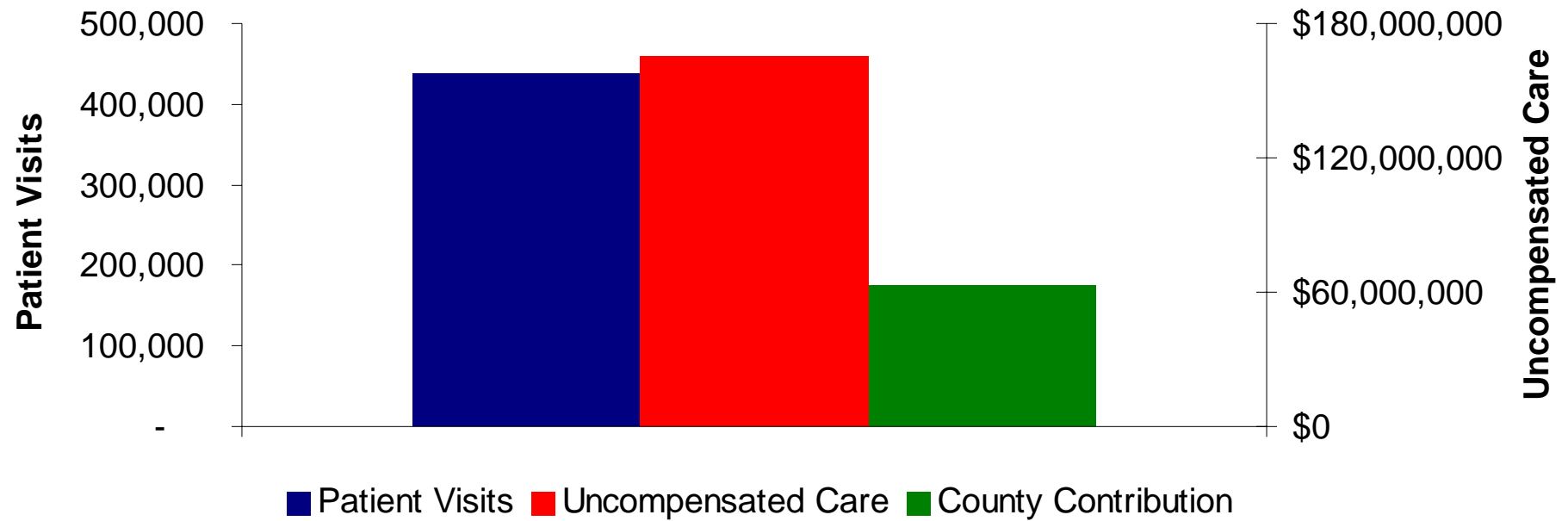


Fulton / DeKalb Uncompensated Care



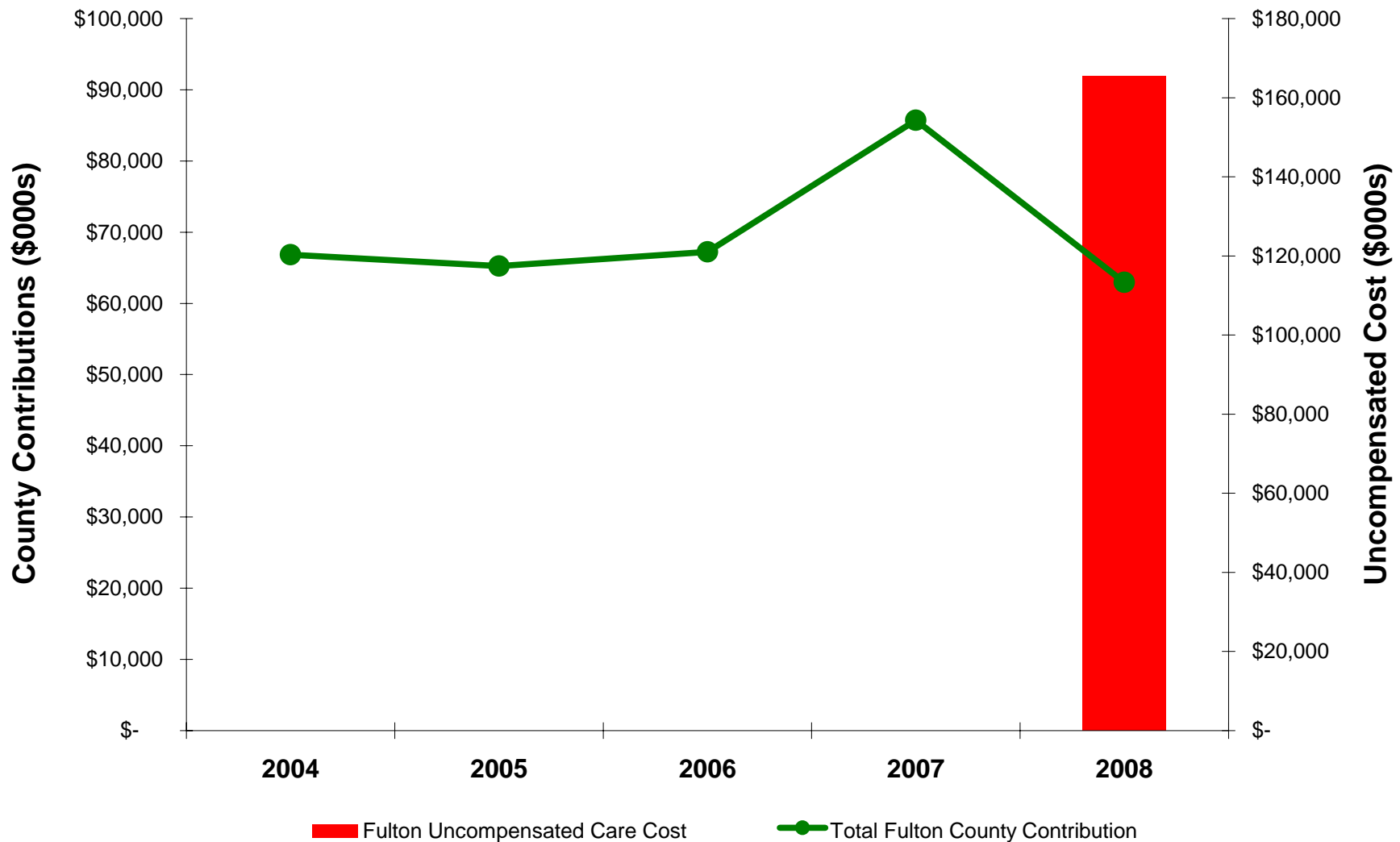
Fulton County Uncompensated Care

Fulton County Uncompensated Care Analysis - 2008



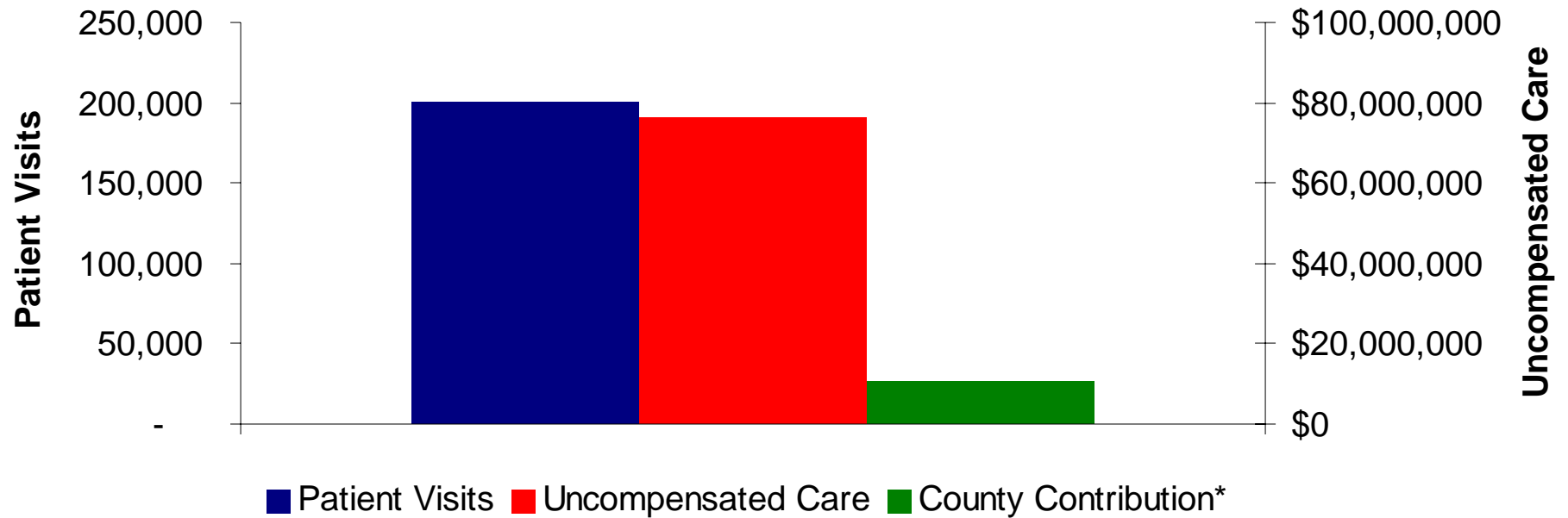
Fulton Historical Contributions and 2008 Uncompensated Care

Fulton County Contributions



DeKalb County Uncompensated Care

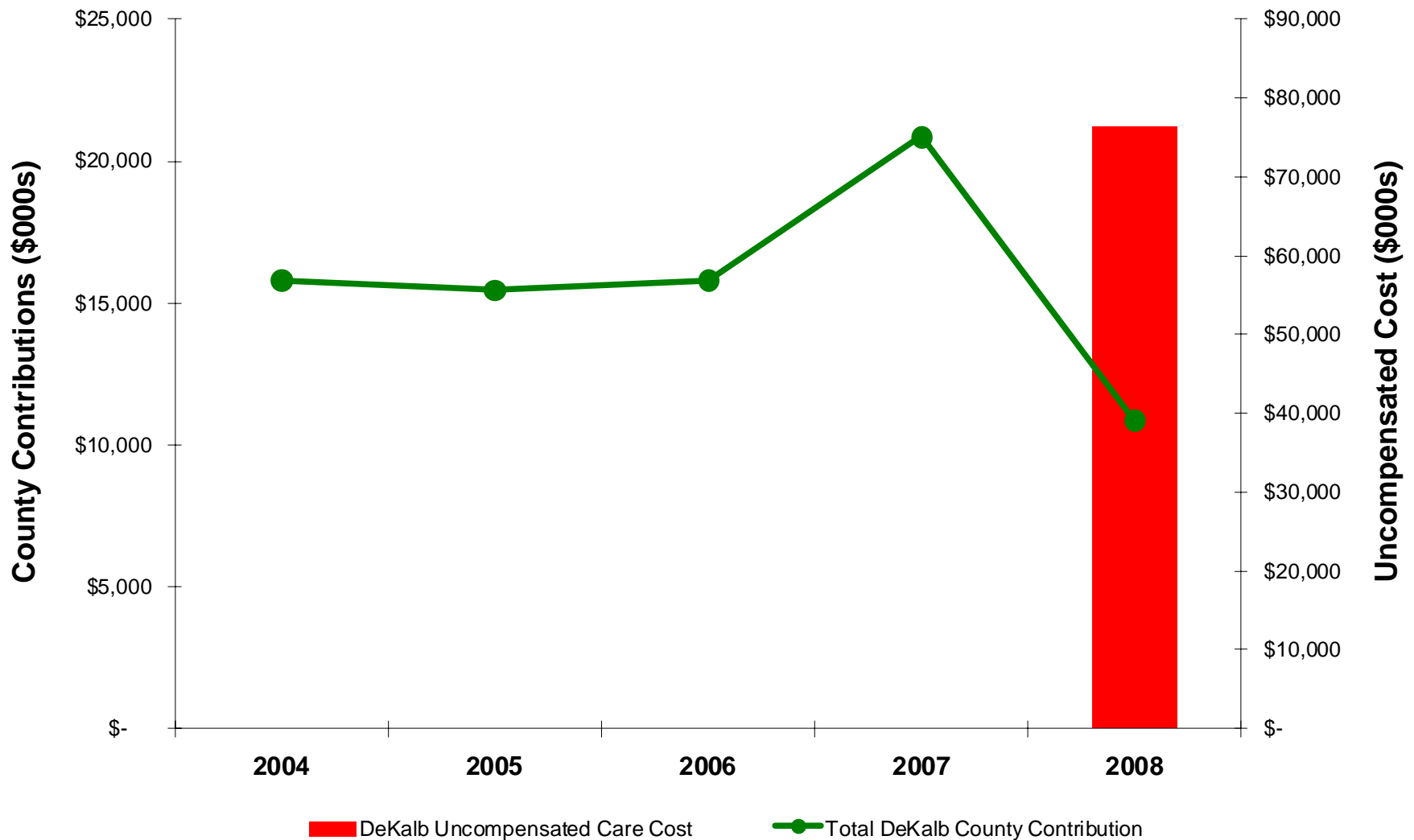
DeKalb County Uncompensated Care Analysis - 2008



*2008 contribution is \$5M less than the approved annual contribution from DeKalb county of \$15.9M. The lower amount in 2008 results from Grady requesting and the county agreeing to contribute an additional \$5M in 2007.

DeKalb Historical Contributions and 2008 Uncompensated Care

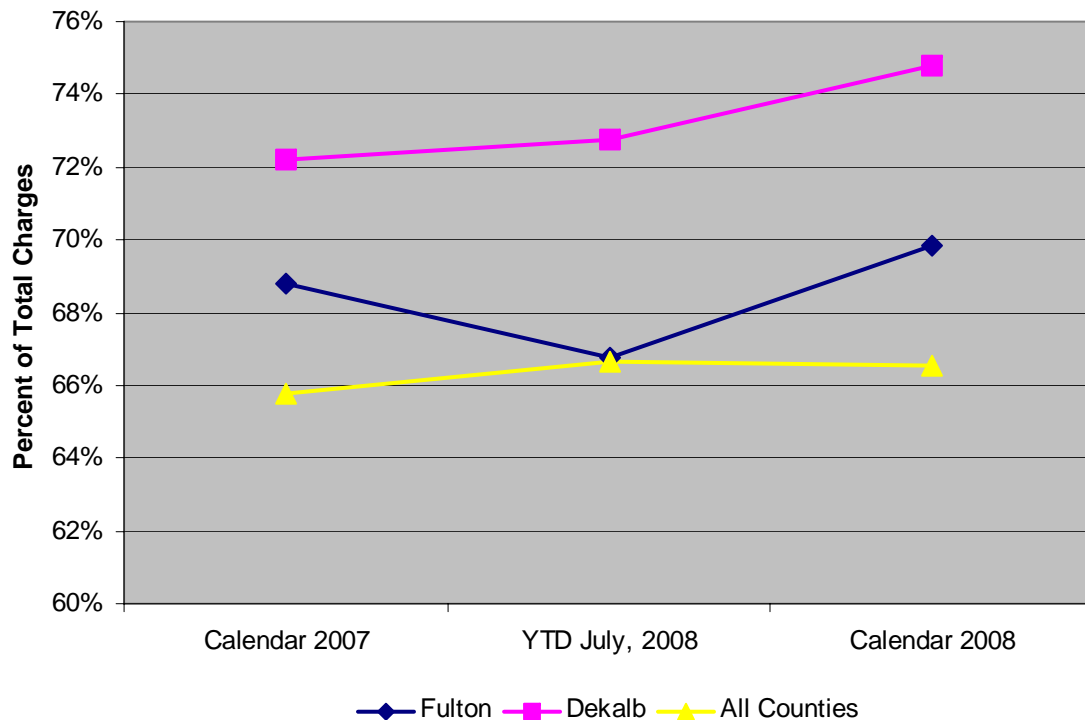
DeKalb County Contributions





Payer mix in Fulton and DeKalb Counties has deteriorated at a faster rate than overall

Indigent Care Trend*



- The economic downturn has a more dramatic impact in Fulton and DeKalb counties.
- Each county has a marked increase in both Medicaid and Uninsured volume between July and December, 2008.
- Grady has not experienced an influx of recently uninsured or Medicaid beneficiaries from other counties.

*Based on charges of the indigent sick as defined by the 1984 contract

Fulton and DeKalb January 2009 Uncompensated Care

Uncompensated Care Analysis - January 2009

